



BRANDON RECTANGULAR FIRE PIT



TECHO-BLOC WARRANTY APPLIES TO BRANDON STONES
THE WARRANTY **DOES NOT APPLY** TO ACCESSORY KIT

NOTES

Sold as a kit not pre-assembled.
Raffinato pre-cut caps included.

Techo-Bloc is not responsible for any damages to the firepit if it is not installed with a sleeve or accessory kit. The firepit is not designed for large fires. Fire should be contained at least 6" away from the firepit wall blocks. Overheating could lead to heat damage to the firepit components.

*For an authentic look, each color option is composed of a variety of darker & lighter tones. Natural ingredients such as granite are present within the recipe to allow for a range in tones, veining and textures from one stone to another.

See 108 for more technical information.

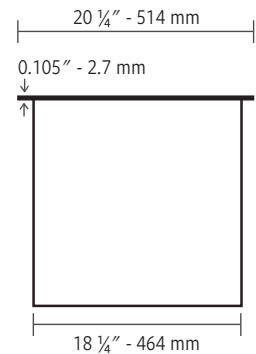
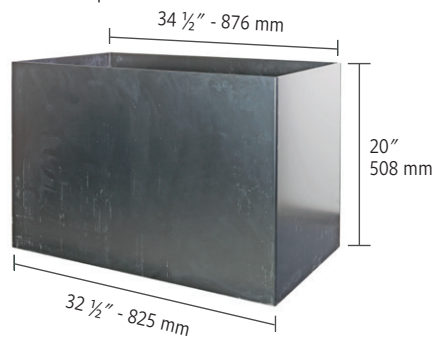
Specifications per pallet

	Imperial	Metric
Cubing	58 units	58 units
Approx. Weight	2 660 lbs	1 207 kg
Overall Height	19 ¹⁵ / ₁₆ in	507 mm
Overall Width	44 ¹ / ₂ in	1 130 mm
Overall Length	57 ³ / ₄ in	1 467 mm
Brandon 90 mm units	20 C units	
Brandon 90 mm corner units	30 units	
Cap units	8 units	

Options and accessories (sold separately)

Sleeve Insert

Wood Firepit



FIRE PIT

CAP

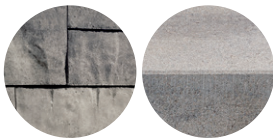
Chestnut Brown



FIRE PIT

CAP

Shale Grey



Burners

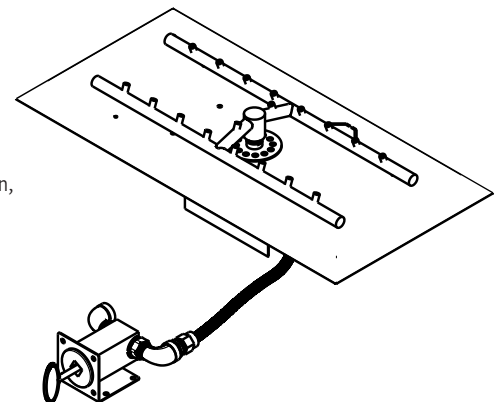
HPC Burners

Features:

Natural Gas or Liquid Propane
Standard BTU: 65K
Push button ignition

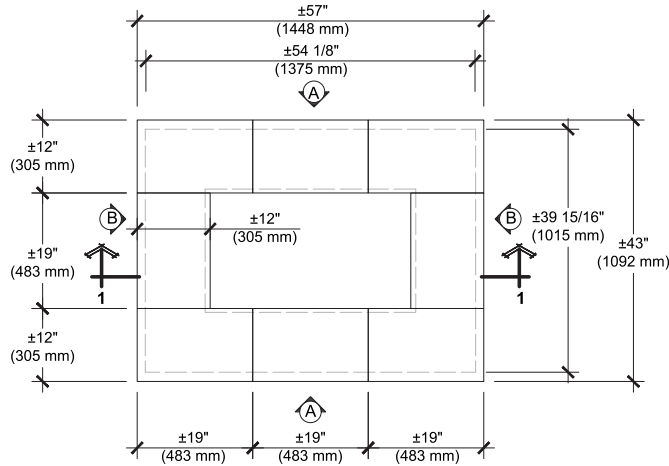
Includes:

Stainless steel burner with aluminum pan, mounting brackets, Dante valve with push-button ignition, vents, lava rock and stainless steel cover.

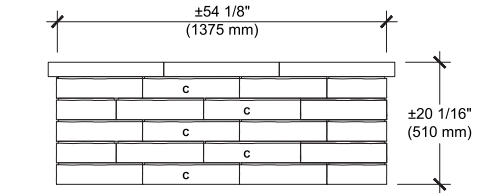


INSTALLATION GUIDE

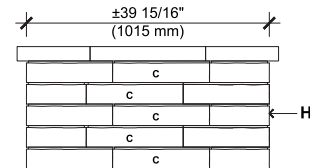
BRANDON RECTANGLE, FIRE PIT (KIT)



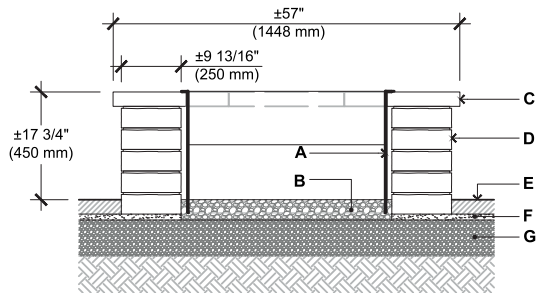
TOP



ELEVATION A



ELEVATION B



SECTION 1-1

- A.** STEEL BOX INSERT
- B.** CLEAN STONE 3/4" (20 mm), 4" (100 mm) THICK
- C.** RAFFINATO CAP 60 mm (PRE-CUT)
- D.** BRANDON 90 mm BLOCK
- E.** TECO-BLOC PAVERS OR SLABS
- F.** SETTING BED 1" (25 mm)
- G.** COMPACTED GRANULAR BASE 0-3/4" (0-20 mm)
- H.** BRANDON 90 mm CORNER BLOCK

QUANTITY OF MATERIALS REQUIRED

- RAFFINATO CAP 60 mm: 8
- Brandon 90 mm block **C**: 20
- Brandon 90 mm corner block: 30

NOTE: Secure the blocks using a heat resistant concrete adhesive. The installer must ensure that the installation and use of the fire pit comply with local regulations and code requirements.

Consult our Installation Guide in our website for a detail step by step installation.



BRANDON SQUARE FIRE PIT



TECHO-BLOC WARRANTY APPLIES TO BRANDON STONES
THE WARRANTY **DOES NOT APPLY** TO ACCESSORY KIT

NOTES

Sold as a kit not pre-assembled.
Raffinato pre-cut caps included.

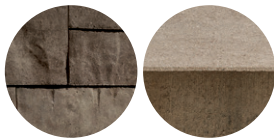
Techo-Bloc is not responsible for any damages to the firepit if it is not installed with a sleeve or accessory kit. The firepit is not designed for large fires. Fire should be contained at least 6" away from the firepit wall blocks. Overheating could lead to heat damage to the firepit components.

*For an authentic look, each color option is composed of a variety of darker & lighter tones. Natural ingredients such as granite are present within the recipe to allow for a range in tones, veining and textures from one stone to another.

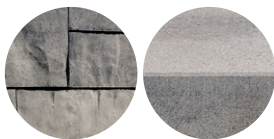
See 110 for more technical information.

Sleeve insert, Burners and Accessories are sold separately.

FIRE PIT CAP
Chestnut Brown



FIRE PIT CAP
Shale Grey



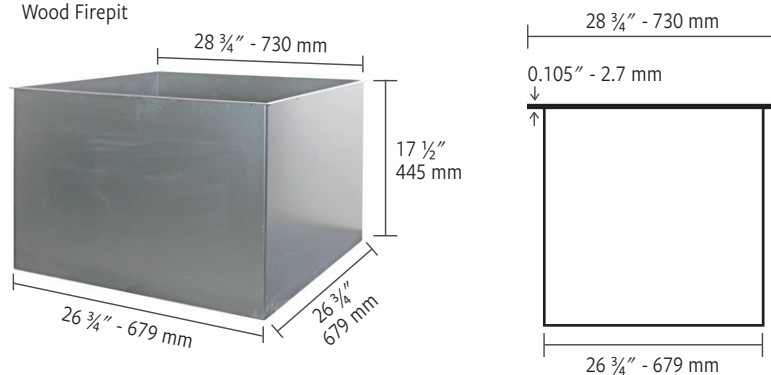
Specifications per pallet

	Imperial	Metric
Cubing	66 units	66 units
Approx. Weight	2 454 lbs	1 113 kg
Overall Height	19 ¹⁵ / ₁₆ in	507 mm
Overall Width	53 ¹ / ₂ in	1 359 mm
Overall Length	53 ¹ / ₂ in	1 359 mm
Brandon 90 mm units	20 A units	20 B units
Brandon 90 mm corner units	20 units	
Cap units	6 units	

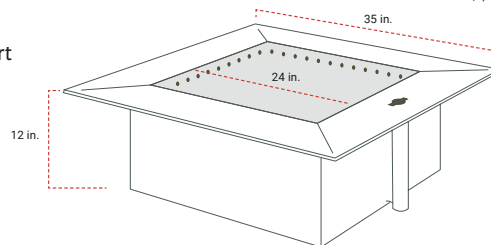
Options and accessories (sold separately)

Sleeve Insert

Wood Firepit



Smokeless Insert



Burners and Accessories

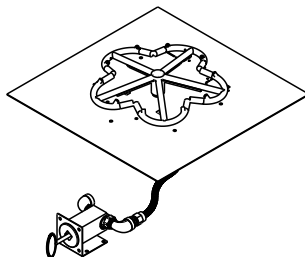
HPC Burners

Features:

Natural Gas or Liquid Propane
Standard BTU: 65K
Push button ignition

Includes:

Stainless steel burner with aluminum pan, mounting brackets, Dante valve with push-button ignition, vents, lava rock and stainless steel cover.



Grilling System Outpost™

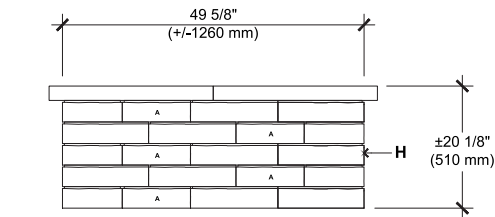
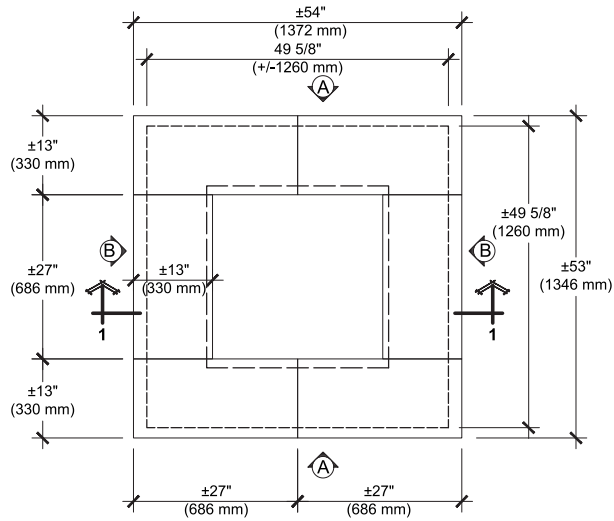
Only for Smokeless inserts

Transforms fire pit into wood-fired grill.
Weight: 12 lbs. 9 oz.
Diameter: 22 inches



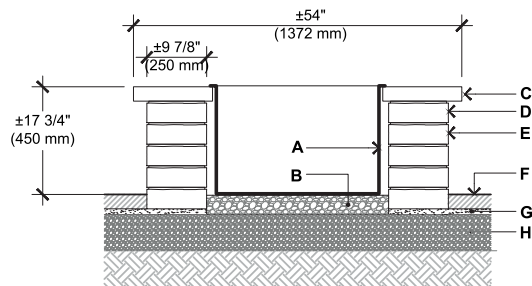
INSTALLATION GUIDE

BRANDON SQUARE, FIRE PIT (KIT)



ELEVATION A

TOP



SECTION 1-1

- A. STEEL BOX INSERT
- B. CLEAN STONE $\frac{3}{4}$ " (20 mm), 4" (100 mm) THICK
- C. RAFFINATO CAP 60 mm (PRE-CUT)
- D. BRANDON 90 mm BLOCK
- E. TECO-BLOC PAVERS OR SLABS
- F. SETTING BED 1" (25 mm)
- G. COMPACTED GRANULAR BASE 0- $\frac{3}{4}$ " (0-20 mm)
- H. BRANDON 90 mm CORNER BLOCK

QUANTITY OF MATERIALS REQUIRED

- RAFFINATO CAP 60 mm: 6
- Brandon 90 mm block: 20 **A**, 20 **B**
- Brandon 90 mm corner block: 20

NOTE: Secure the blocks using a heat resistant concrete adhesive. The installer must ensure that the installation and use of the fire pit comply with local regulations and code requirements.

Consult our Installation Guide in our website for a detail step by step installation.

PLEASE REFER TO P.4 FOR THE CORRECT USE AND LIMITATIONS OF PROVIDED TECHNICAL INFORMATION.