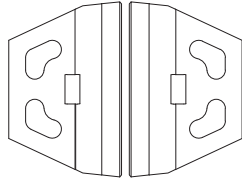




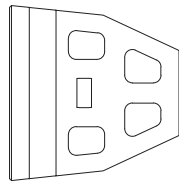
# SKYSCRAPER

DESCRIPTION: Wall TEXTURE: Smooth

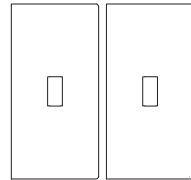
## PALLET OVERVIEW - TOP UNIT



## PALLET OVERVIEW - MIDDLE UNIT



## PALLET OVERVIEW - CORNER UNIT



### COMPATIBLE CAPS

See page 140 for product compatibility.

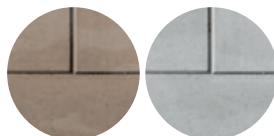
### NOTES

Clamp or Mechanical tool available for machine installation. Check with your local Techo-Bloc representative for more information.

See page 135 to 156 for more technical information.

Chestnut Brown

Shale Grey



Specifications per pallet		Imperial	Metric
TOP UNIT	Cubing	<b>12.00 ft<sup>2</sup></b>	1.11 m <sup>2</sup>
		12.00 lin ft	3.66 lin m
	Approx. Weight	2 100 lbs	953 kg
	Number of rows	2	
	Coverage per row	6.00 ft <sup>2</sup>	0.56 m <sup>2</sup>
	Linear coverage per row	6.00 lin ft	1.83 lin m



A



Unit dimensions	in	mm	Units/pallet
Height	12	305	4 units
Depth	23 ¼	590	
Length 1	36	914	
Length 2	20 ¾	513	

Specifications per pallet		Imperial	Metric
MIDDLE UNIT	Cubing	<b>6.00 ft<sup>2</sup></b>	0.56 m <sup>2</sup>
		6.00 lin ft	1.83 lin m
	Approx. Weight	1 620 lbs	735 kg
	Number of rows	2	
	Coverage per row	3.00 ft <sup>2</sup>	0.28 m <sup>2</sup>
	Linear coverage per row	3.00 lin ft	0.91 lin m



A



Unit dimensions	in	mm	Units/pallet
Height	12	305	2 units
Depth	34 ⅞	886	
Length 1	36	914	
Length 2	17 ½	444	

Specifications per pallet		Imperial	Metric
CORNER UNIT	Cubing	<b>4 units</b>	4 units
	Approx. Weight	2 460 lbs	1 116 kg
	Number of rows	2	



A



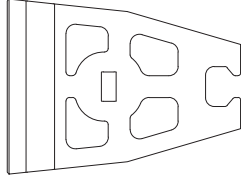
Unit dimensions	in	mm	Units/pallet
Height	12	305	4
Depth	18	457	
Length	36	914	



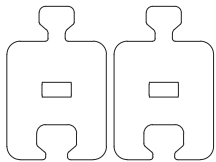
# SKYSCRAPER

DESCRIPTION: Wall TEXTURE: Smooth

## PALLET OVERVIEW - BASE UNIT



## PALLET OVERVIEW - EXTENDER UNIT



### COMPATIBLE CAPS

See page 140 for product compatibility.

### NOTES

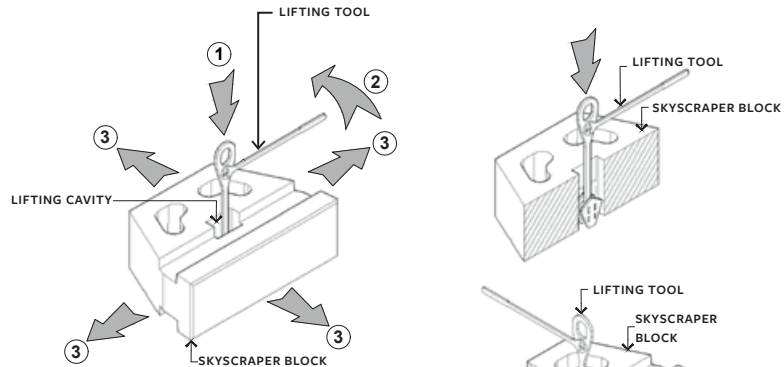
See page 135 to 156 for more technical information.

Specifications per pallet		Imperial	Metric
BASE UNIT	Cubing	<b>6.00 ft<sup>2</sup></b>	0.56 m <sup>2</sup>
		6.00 lin ft	1.83 lin m
	Approx. Weight	1 860 lbs	844 kg
	Number of rows	2	
	Coverage per row	3.00 ft <sup>2</sup>	0.28 m <sup>2</sup>
	Linear coverage per row	3.00 lin ft	0.91 lin m

Unit dimensions		in	mm	Units/pallet
	Height	12	305	2 units
	Depth	48 <sup>1</sup> / <sub>16</sub>	1220	
	Length 1	36	914	
	Length 2	17 <sup>5</sup> / <sub>16</sub>	440	

Specifications per pallet		Imperial	Metric
EXTENDER UNIT	Cubing	<b>4 units</b>	4 units
	Approx. Weight	1 800 lbs	816 kg
	Number of rows	2	

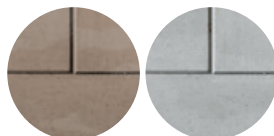
Unit dimensions		in	mm	Units/pallet
	Height	12	305	4 units
	Depth	24 <sup>3</sup> / <sub>8</sub>	619	
	Length 2	20 <sup>1</sup> / <sub>2</sub>	520	



- NOTE:**
1. INSERT TECO-BLOC LIFTING TOOL INTO THE LIFTING CAVITY.
  2. TURN THE LIFTING TOOL TO LOCK THE SYSTEM.
  3. MOVE AND INSTALL BLOCK AS REQUIRED.
  4. USE EQUIPMENT AND RIGGING CONFORMING TO LOCAL CODES AND CAPABLE OF LIFTING EACH UNIT WEIGHT.

Chestnut Brown

Shale Grey



# TECHO—BLOC

## DESIGN CHART SKYSCRAPER

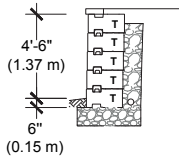
NEAR VERTICAL

### ALLOWABLE STRESS DESIGN

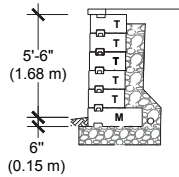
CLEAN SAND/ SAND AND GRAVEL MIXES ( $\phi=34^\circ$ ,  $\gamma = 130$  pcf)

**CASE N° 1 :**  
No Surcharge  
No Backslope  
No Toe Slope

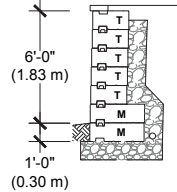
**5 ft (1.52 m) Total Height**  
T: 5



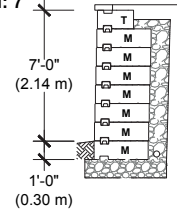
**6 ft (1.83 m) Total Height**  
T: 5  
M: 1



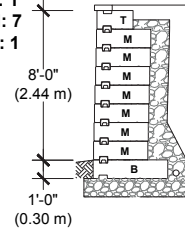
**7 ft (2.13 m) Total Height**  
T: 5  
M: 2



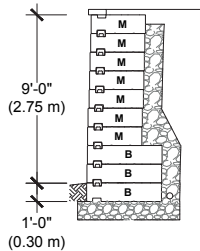
**8 ft (2.44 m) Total Height**  
T: 1  
M: 7



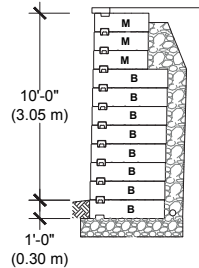
**9 ft (2.74 m) Total Height**  
T: 1  
M: 7  
B: 1



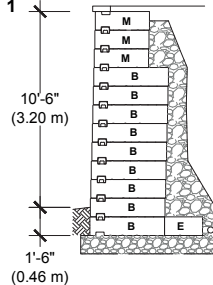
**10 ft (3.05 m) Total Height**  
M: 7  
B: 3



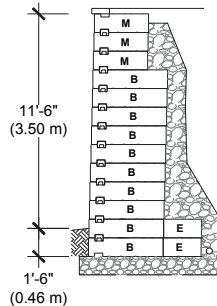
**11 ft (3.35 m) Total Height**  
M: 3  
B: 8



**12 ft (3.66 m) Total Height**  
M: 3  
B: 8  
BE: 1

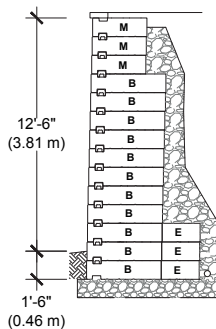


**13 ft (3.96 m) Total Height**  
M: 3  
B: 8  
BE: 2

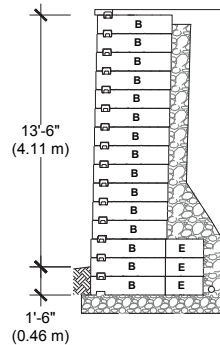


VISIT [WWW.TECHO-BLOC.COM](http://WWW.TECHO-BLOC.COM) FOR COMPLETE DESIGN CHART DOCUMENT  
(USA AND CANADA VERSIONS)

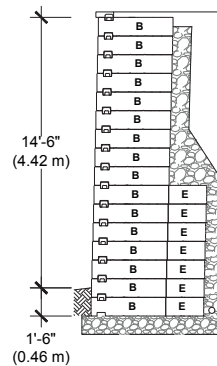
**14 ft (4.27 m) Total Height**  
M: 3  
B: 8  
BE: 3



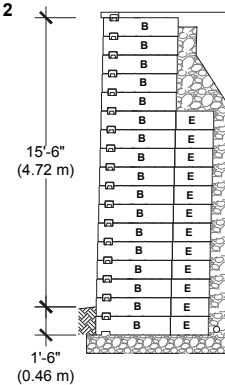
**15 ft (4.57 m) Total**  
B: 12  
BE: 3



**16 ft (4.88 m) Total Height**  
B: 9  
BE: 7

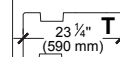


**17 ft (5.18 m) Total Height**  
B: 5  
BE: 12

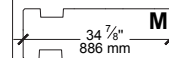


- The information contained in the design charts is supplied for information purposes only and as such should only be used for preliminary designs.
- The height (H) of the wall does not include the thickness of the cap.
- Soil parameters: retained soil ( $\phi = 34^\circ$ ,  $\gamma = 130$  pcf); foundation soil ( $\phi = 34^\circ$ ,  $\gamma = 120$  pcf)
- A qualified engineer should be consulted for the final design to be used for construction.
- The foundation soil must be able to support the wall system. The bearing capacity of the foundation soil, settlement, and global stability must be verified and validated by a qualified geotechnical engineer.
- The seismic analysis is not included.
- The design charts do not apply to tiered walls.
- The charts assume that the walls are constructed in accordance with Techo-Bloc specifications, good construction practice and an adequate drainage system.
- Engineering judgement should be used when interpolating between heights.
- Techo-Bloc and its predecessors, successors, beneficiaries, employees, associates, administrators and insurers accepts no liability for the incorrect use of information contained in the design charts.
- For further information, please contact our technical service department.

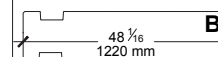
#### LEGEND :



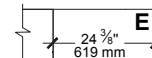
**TOP UNIT**



**MIDDLE UNIT**



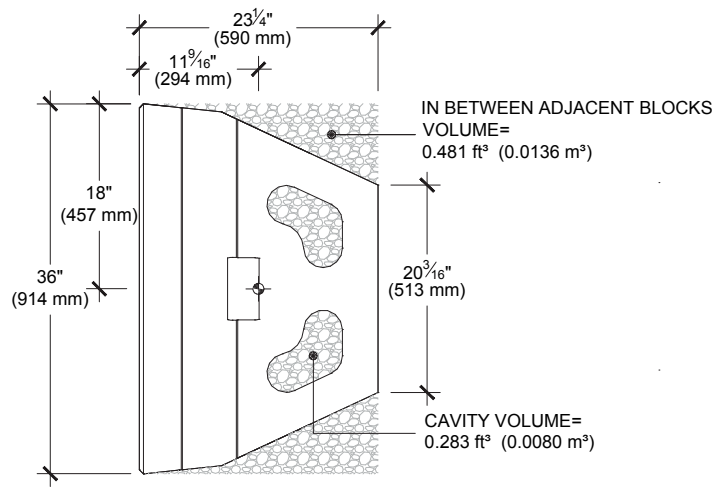
**BASE UNIT**



**E EXTENDER UNIT**

# INSTALLATION GUIDE

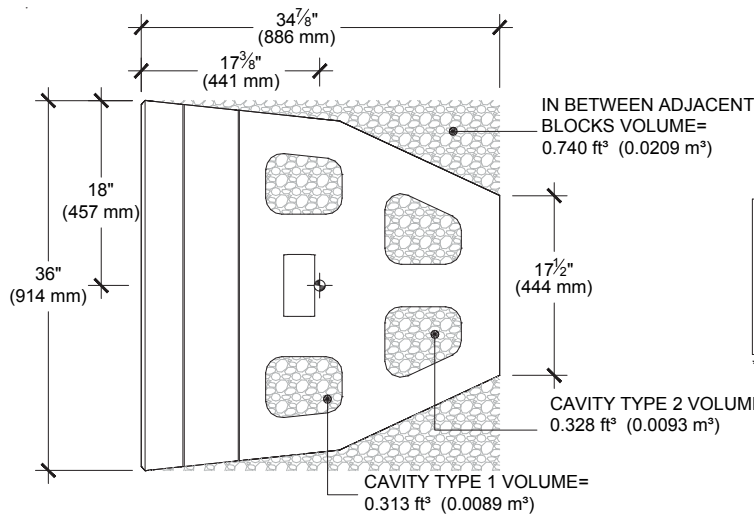
## CAVITY INFILL - SKYSCRAPER



### SKYSCRAPER TOP

AGGREGATE INFILL QUANTITY	PER UNIT	±1.53 ft <sup>3</sup>	(±0.043 m <sup>3</sup> )
		±147.91 lb	(±66.65 kg)
PER WALL AREA		±0.51 ft <sup>3</sup> /ft <sup>2</sup>	(±0.16 m <sup>3</sup> /m <sup>2</sup> )
		±49.37 lb/ft <sup>2</sup>	(±248 kg/m <sup>2</sup> )

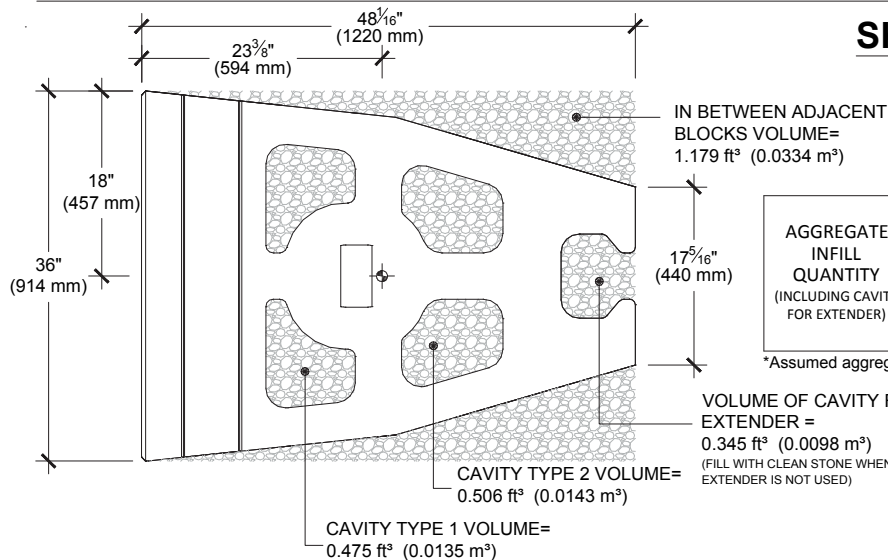
\*Assumed aggregate unit weight of 96.8 lb/ft<sup>3</sup> (1550 kg/m<sup>3</sup>)



### SKYSCRAPER MIDDLE

AGGREGATE INFILL QUANTITY	PER UNIT	±2.76 ft <sup>3</sup>	(±0.078 m <sup>3</sup> )
		±267.17 lb	(±120.9 kg)
PER WALL AREA		±0.92 ft <sup>3</sup> /ft <sup>2</sup>	(±0.28 m <sup>3</sup> /m <sup>2</sup> )
		±89.06 lb/ft <sup>2</sup>	(±434 kg/m <sup>2</sup> )

\*Assumed aggregate unit weight of 96.8 lb/ft<sup>3</sup> (1550 kg/m<sup>3</sup>)



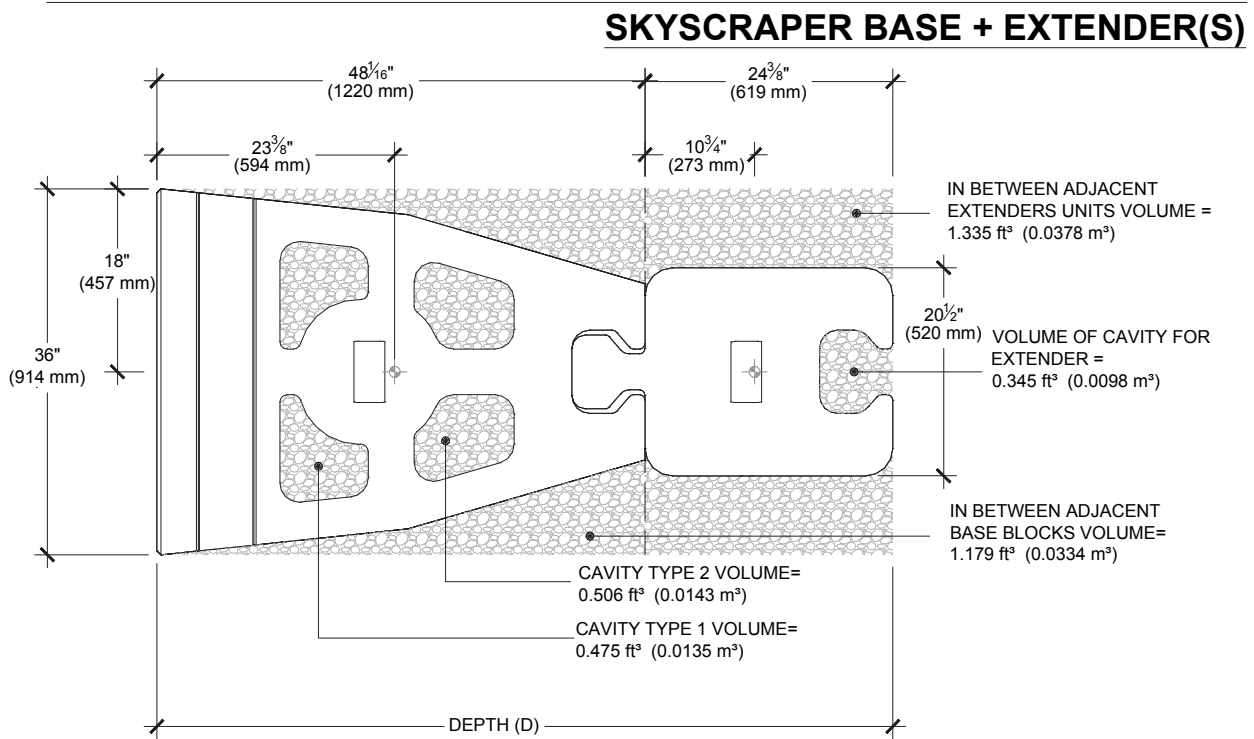
### SKYSCRAPER BASE

AGGREGATE INFILL QUANTITY (INCLUDING CAVITY FOR EXTENDER)	PER UNIT	±4.67 ft <sup>3</sup>	(±0.132 m <sup>3</sup> )
		±452.06 lb	(±204.6 kg)
PER WALL AREA		±1.56 ft <sup>3</sup> /ft <sup>2</sup>	(±0.47 m <sup>3</sup> /m <sup>2</sup> )
		±151.01 lb/ft <sup>2</sup>	(±728.5 kg/m <sup>2</sup> )

\*Assumed aggregate unit weight of 96.8 lb/ft<sup>3</sup> (1550 kg/m<sup>3</sup>)

# INSTALLATION GUIDE

## CAVITY INFILL - SKYSCRAPER



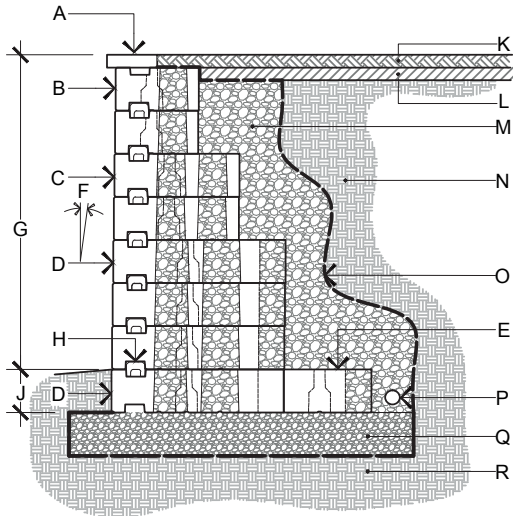
### Aggregate Infill Quantity (INCLUDING CAVITY FOR EXTENDER)

# OF EXTENDERS	DEPTH (D)		PER UNIT				PER WALL AREA			
1	72 3/8 "	1839 mm	±7.35 ft <sup>3</sup>	(±0.208 m <sup>3</sup> )	±711 lb	(±322 kg)	±2.45 ft <sup>3</sup> /ft <sup>2</sup>	(± 0.75 m <sup>3</sup> /m <sup>2</sup> )	±237 lb/ft <sup>2</sup>	(±1163 kg/m <sup>2</sup> )
2	96 3/4 "	2458 mm	±10.02 ft <sup>3</sup>	(±0.283 m <sup>3</sup> )	±970 lb	(±439 kg)	±3.34 ft <sup>3</sup> /ft <sup>2</sup>	(± 1.02 m <sup>3</sup> /m <sup>2</sup> )	±323 lb/ft <sup>2</sup>	(±1581 kg/m <sup>2</sup> )
3	121 1/8 "	3077 mm	±12.69 ft <sup>3</sup>	(±0.359 m <sup>3</sup> )	±1228 lb	(±556 kg)	±4.23 ft <sup>3</sup> /ft <sup>2</sup>	(± 1.29 m <sup>3</sup> /m <sup>2</sup> )	±409 lb/ft <sup>2</sup>	(±2000 kg/m <sup>2</sup> )
4	145 1/2 "	3696 mm	±15.36 ft <sup>3</sup>	(±0.435 m <sup>3</sup> )	±1487 lb	(±674 kg)	±5.12 ft <sup>3</sup> /ft <sup>2</sup>	(± 1.56 m <sup>3</sup> /m <sup>2</sup> )	±496 lb/ft <sup>2</sup>	(±2418 kg/m <sup>2</sup> )
5	169 7/8 "	4315 mm	±18.03 ft <sup>3</sup>	(±0.510 m <sup>3</sup> )	±1745 lb	(±791 kg)	±6.01 ft <sup>3</sup> /ft <sup>2</sup>	(± 1.83 m <sup>3</sup> /m <sup>2</sup> )	±582 lb/ft <sup>2</sup>	(±2837 kg/m <sup>2</sup> )
6	194 1/4 "	4934 mm	±20.70 ft <sup>3</sup>	(±0.586 m <sup>3</sup> )	±2004 lb	(±908 kg)	±6.9 ft <sup>3</sup> /ft <sup>2</sup>	(± 2.1 m <sup>3</sup> /m <sup>2</sup> )	±668 lb/ft <sup>2</sup>	(±3255 kg/m <sup>2</sup> )

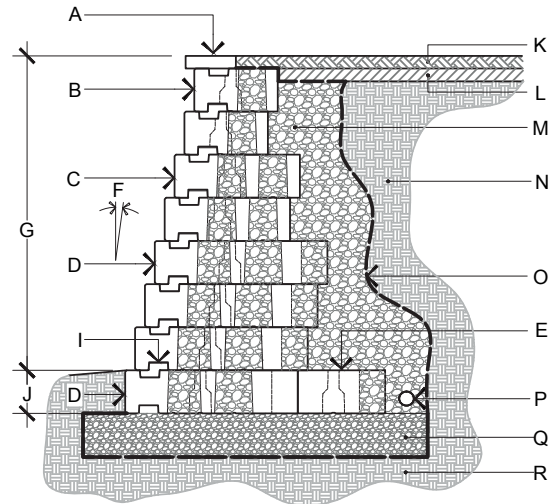
\*Assumed aggregate unit weight of 96.8 lb/ft<sup>3</sup> (1550 kg/m<sup>3</sup>)

# INSTALLATION GUIDE

## GRAVITY WALLS - SKYSCRAPER



**GRAVITY NEAR VERTICAL WALL DETAIL**



**GRAVITY INCLINED WALL DETAIL**

- A. CAP FROM TECHO-BLOC
- B. SKYSCRAPER TOP UNIT FROM TECHO-BLOC
- C. SKYSCRAPER MIDDLE UNIT FROM TECHO-BLOC
- D. SKYSCRAPER BASE UNIT FROM TECHO-BLOC
- E. SKYSCRAPER EXTENDER UNIT FROM TECHO-BLOC
- F. WALL INCLINATION:
  - 0.8° (NEAR VERTICAL)
  - 12.7° (INCLINED)
- G. EXPOSED HEIGHT
- H. PRECAST CONCRETE "U" CONNECTOR

- I. PRECAST CONCRETE "Z" CONNECTOR
- J. EMBEDMENT DEPTH
- K. TOP SOIL
- L. LOW PERMEABILITY SOIL
- M. 3/4" (20 mm) CLEAN STONE, 12" (300 mm) THICK MIN
- N. RETAINED SOIL
- O. GEOTEXTILE
- P. PERFORATED DRAIN
- Q. LEVELING PAD
- R. FOUNDATION SOIL